

### LACT UNITS

Lease Automatic Custody Transfer (LACT) units are used to accurately measure and transfer produced oil or gas into a pipeline, truck, vessel or storage tanks for ownership transfer. The system continuously monitor quantity and quality of the product to be transferred.

### APPLICATIONS:

- Truck/rail loading from tank
- Truck/rail unloading to tank
- Oil delivery to or from pipeline
- City Gates
- Gas transfer systems



### FEATURES:

- Turn-Key systems are designed and built to client specifications
- Fully automated option allows unattended 24h/7d operation
- Piping designed to ANSI B31.3, B31.4 or B31.8 as applicable.
- Metering equipment to API, OIML, ISO.
- Accurate flow metering and totalizer, suitable for custody transfer.
- Control panels suitable for Class 1 Div 2 Area
- Modular design for easy installation & set-up. Reduces on-site work.
- Skid mounted, shop tested & ready to operate.

### BASIC COMPONENTS:

- Flow meter and totalizer
- BS&W monitor (liquid)
- In-line Strainer
- Vapor eliminator (liquid)
- Prover manifold
- Process monitoring (pressure, temperature, density)
- Sampling system (optional)
- Charge Pump (liquid)
- Control panel

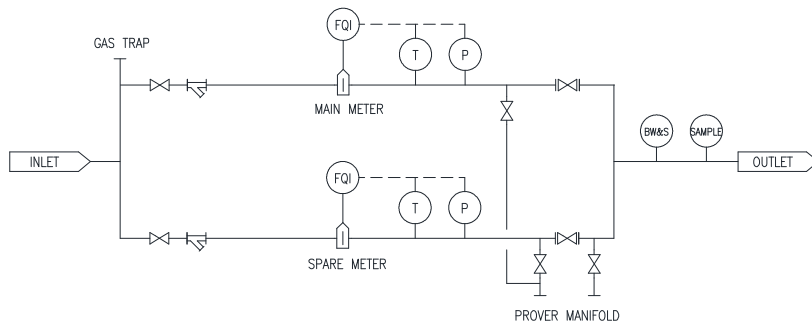
### AVAILABLE MODELS:

- **BL Series:** Pumped, for liquid, intermittent service.
- **CL Series:** In-line, for liquid continuous service.
- **XL Series:** For liquid, custom applications.
- **CG Series:** In-line, for gas continuous service.
- **XG Series:** For gas, custom applications.

# LACT UNIT CL SERIES

LACT units, CL series are used for liquid in continuous service to accurately measure and transfer produced oil into or from a pipeline. The system continuously monitor quantity and quality of the oil to be transferred. Multiple metering runs can be used for high flow applications.

### SKETCH:



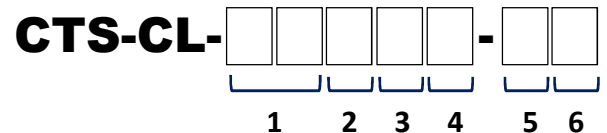
### FEATURES:

- Turn-Key systems are designed and built to client specifications
- Fully automated option allows unattended 24h/7d operation
- Piping designed to ANSI B31.3 or B31.4.
- Metering equipment to API, OIML, ISO.
- Accurate liquid metering & flow totalizer suitable for custody transfer.
- Control panels suitable for Class 1 Div 2 Area
- Skid mounted, shop tested & ready to operate, modular design for easy installation & set-up, reducing on-site construction work.
- Multiple metering runs for scalable applications
- Spare metering run connected in parallel is included for on-line maintenance of any flow meter.
- Flowmeter options: coriolis, turbine or positive displacement.

### BASIC COMPONENTS:

- Flow meter and totalizer.
- BS&W monitor w/probe.
- In-line Strainer
- Vapor eliminator
- Prover manifold w/isolation valves
- Process monitoring (pressure, temperature, density)
- Sampling system
- Optional verification loop allows connection of two meters in series for verification.
- Control Panel
- Metallic skid frame with lifting lugs
- Isolation valves for each metering run.

### MODEL NUMBER LOOKUP:

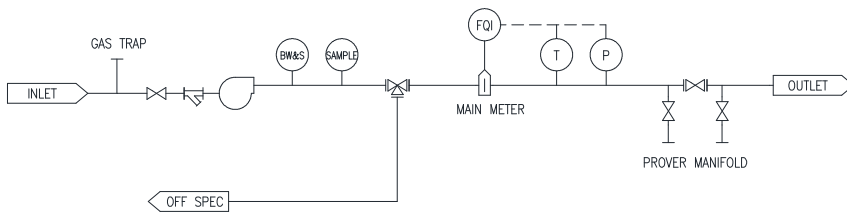


- 1:** Meter run diameter (inches)
- 2:** ANSI class:      **A** = 150# RF  
                              **B** = 300# RF  
                              **D** = 600# RF
- 3:** Number of metering runs
- 4:** Main material:      **C** = Carbon Steel  
                              **S** = Stainless Steel
- 5:** Flow meter type: **C** = Coriolis  
                              **T** = Turbine  
                              **U** = Ultrasonic  
                              **P** = Positive Displacement
- 6:** Sampling system: **M** = Manual  
                              **A** = Automatic  
                              **O** = None

# LACT UNIT BL SERIES

LACT units, BL series are used for liquid intermittent service to accurately measure and transfer produced oil into a pipeline, truck or tank. The system uses a charge pump which operates in combination with tank level control panel to ensure a safe operation. BS&W probe continuously monitor the quality of the oil to be transferred. Multiple systems can be used for high flow applications. Automatic 3-way diverter valve can be used to segregate off spec product.

### SKETCH:



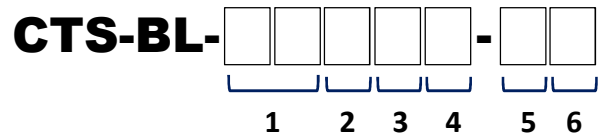
### FEATURES:

- Turn-Key systems are designed and built to client specifications
- Fully automated option allows unattended 24h/7d operation
- Piping designed to ANSI B31.3 or B31.4.
- Metering equipment to API, OIML, ISO.
- Accurate liquid metering & flow totalizer suitable for custody transfer.
- Control panels suitable for Class 1 Div 2 Area
- Skid mounted, shop tested & ready to operate, modular design for easy installation & set-up, reducing on-site construction work.
- Flowmeter options: Coriolis, turbine or positive displacement.
- Optional accessories available (back pressure valve, diverter valve, vapor trap, etc)

### BASIC COMPONENTS:

- Flow meter and totalizer.
- BS&W monitor w/probe.
- In-line Strainer/Vapor eliminator
- Prover manifold w/isolation valves
- Process monitoring (pressure, temperature, density)
- Sampling system
- Optional 3-way diverter valve for off-spec product handling.
- Control Panel
- Metallic skid frame with lifting lugs
- Charge pump.

### MODEL NUMBER LOOKUP:

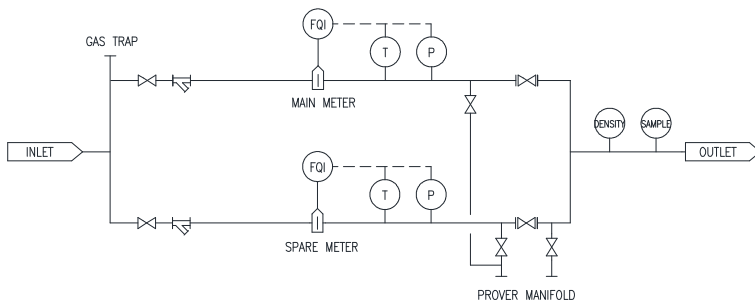


- 1:** Meter run diameter (inches)
- 2:** ANSI class:      **A** = 150# RF  
                              **B** = 300# RF  
                              **D** = 600# RF
- 3:** Number of metering runs
- 4:** Main material:      **C** = Carbon Steel  
                              **S** = Stainless Steel
- 5:** Flow meter type: **C** = Coriolis  
                              **T** = Turbine  
                              **U** = Ultrasonic  
                              **P** = Positive Displacement
- 6:** Sampling system: **M** = Manual  
                              **A** = Automatic  
                              **O** = None

# LACT UNIT CG SERIES

LACT units, CG series are used for continuous service to accurately measure and transfer produced gas into or from a pipeline. The system continuously monitor quantity and quality of the gas to be transferred. Multiple metering runs can be used for high flow applications.

### SKETCH:



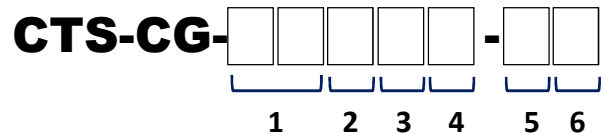
### FEATURES:

- Turn-Key systems are designed and built to client specifications
- Fully automated option allows unattended 24h/7d operation
- Piping designed to ANSI B31.3 or B31.8.
- Metering equipment to API, OIML, ISO.
- Accurate gas metering & flow totalizer suitable for custody transfer.
- Control panels suitable for Class 1 Div 2 Area
- Skid mounted, shop tested & ready to operate, modular design for easy installation & set-up, reducing on-site construction work.
- Multiple metering runs for scalable applications
- Spare metering run connected in parallel is included for on-line maintenance of any flow meter.
- Flowmeter options: coriolis, turbine, ultrasonic or positive displacement.
- Flow correction per AGA

### BASIC COMPONENTS:

- Flow meter and totalizer.
- In-line Strainer
- Chromatograph
- Prover manifold w/isolation valves
- Process monitoring (pressure, temperature, density)
- Sampling system
- Optional verification loop allows connection of two meters in series for verification.
- Control Panel
- Metallic skid frame with lifting lugs
- Isolation valves for each metering run.

### MODEL NUMBER LOOKUP:



- 1:** Meter run diameter (inches)
- 2:** ANSI class:        **A** = 150# RF  
                              **B** = 300# RF  
                              **D** = 600# RF
- 3:** Number of metering runs
- 4:** Main material:        **C** = Carbon Steel  
                              **S** = Stainless Steel
- 5:** Flow meter type:    **C** = Coriolis  
                              **T** = Turbine  
                              **U** = Ultrasonic  
                              **P** = Positive Displacement
- 6:** Sampling system:    **M** = Manual  
                              **A** = Automatic  
                              **O** = None